



# THE FUTURE OF CORRUGATED BOX MAKING IS HERE

VISIT [WWW.BOXMAKER.TECH](http://WWW.BOXMAKER.TECH)





# ABOUT US

**The most cost-effective carton box making machine. Allows for multiple functions - Lead-edge feeding, slotting, scoring, slitting, trimming, die-cutting, and inline gluing.**

Discover the next generation of corrugated box making with our advanced machines. Offering top precision and efficiency, our box makers cater to various industries with customizable solutions. Upgrade your packaging process with our innovative technology designed for modern business needs. Embrace the future of packaging today!

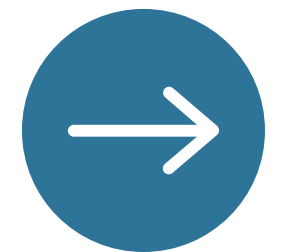




# VISION & MISSION

Discover the next generation of corrugated box making with our advanced machines. Offering top precision and efficiency, our box makers cater to various industries with customizable solutions. Upgrade your packaging process with our innovative technology designed for modern business needs. Embrace the future of packaging today!

**For enquiry call :**  
**+91 84477 31702**



# WHY US

**Our Box Makers are the most advanced and integrated box making machines giving the solutions to the short-run and serial production process of corrugated cardboard boxes.**





# MAJOR FUNCTIONS

## Major Functions Of THE BOX MAKING Machine

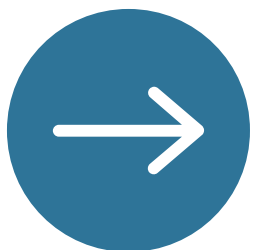
### CARDBOARD FEEDING

- 20-50 sheets can be loaded, thickness ranging from 10 to 2 mm.
- A continuous cardboard feeding system with a vacuum pump makes cardboard feeding more accurate.



### HORIZONTAL SLOTTING & SCORING

- Two 500mm symmetrical slotting knives
- Slotting knife and creasing beam integrated design





# MAJOR FUNCTIONS

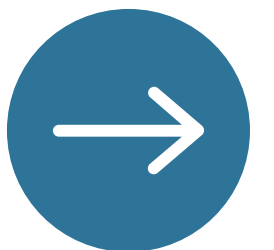
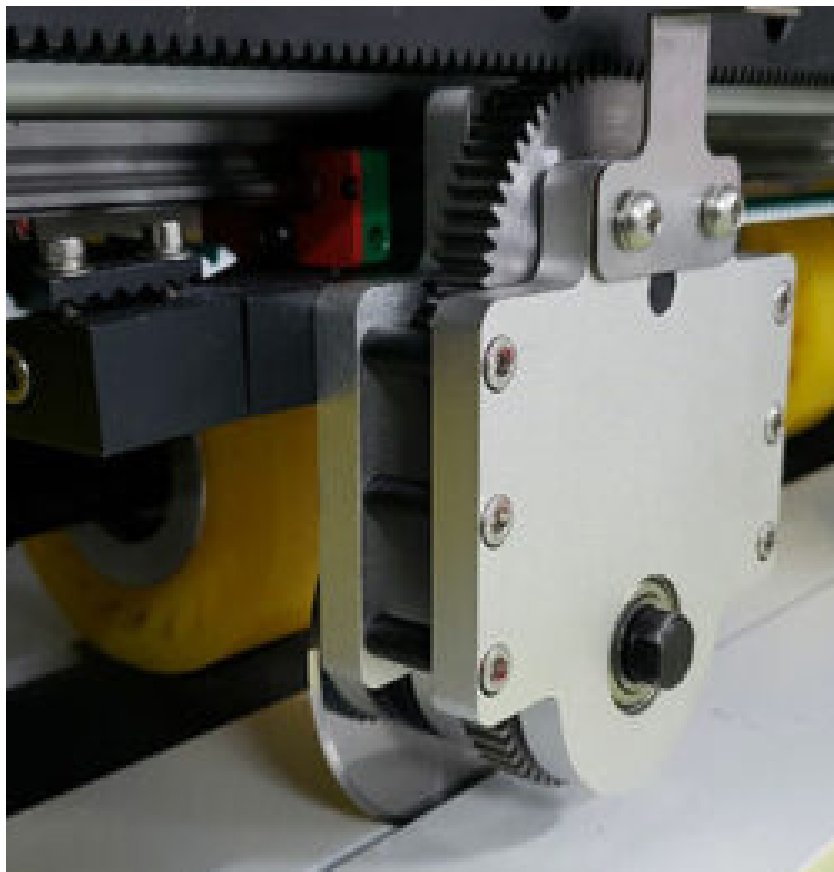
## Major Functions Of THE BOX MAKING Machine

### VERTICAL SCORING & SLITTING

- 4 Cutting knives, rotated by the servo motor to make the side of the carton box more beautiful and flat
- 4 Scoring/Creasing wheels

### CROSS CUTTING SYSTEM

- Cut off extra cardboard without an additional paper separator





# MAJOR FUNCTIONS

## Major Functions Of THE BOX MAKING Machine

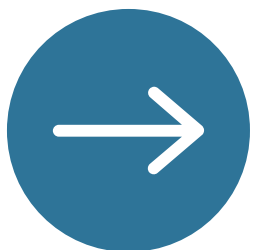
### DIE CUTTING SYSTEM

- Hand hole, vent hole, special-shaped rounded corners.
- Cheap module and easy replacement.
- Available in BM2508-PLUS and BM3000-HD models



### INLINE GLUING SYSTEM

- Inline cold gluing auto application, no need for extra gluing machine.
- Highest efficiency and versatility.



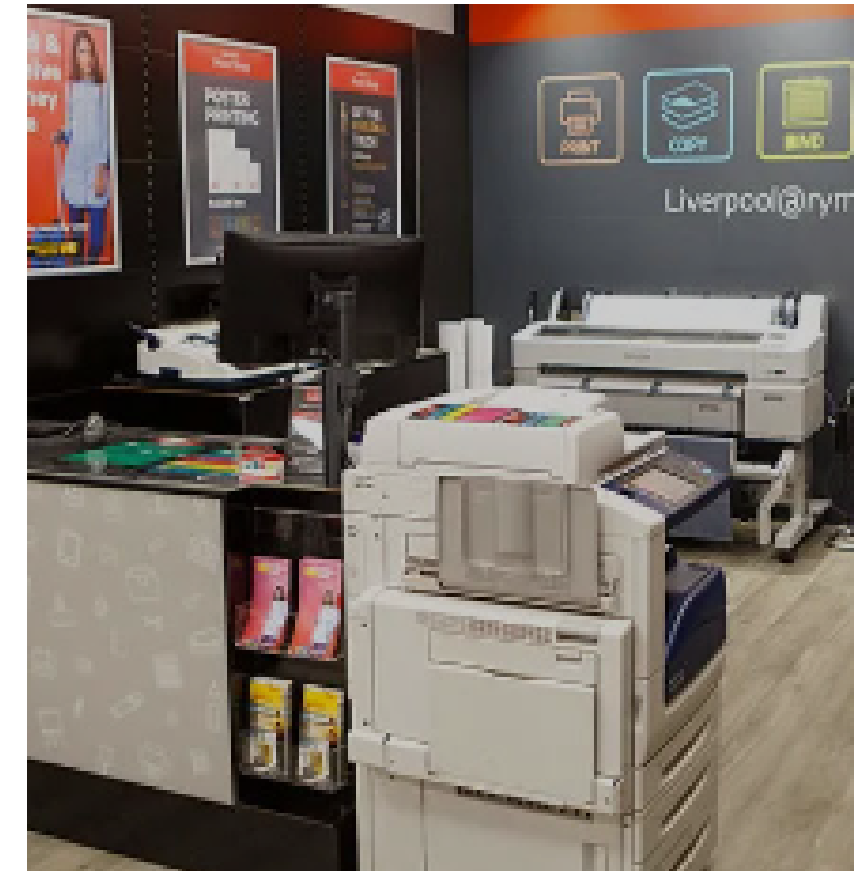
# INDUSTRIES WE SERVE



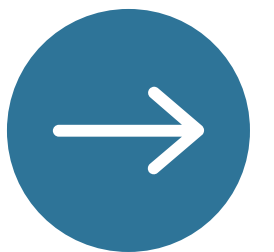
**BOX  
FACTORY**



**HARDWARE  
FACTORY**



**INTERNET  
PRINTING  
STORE**





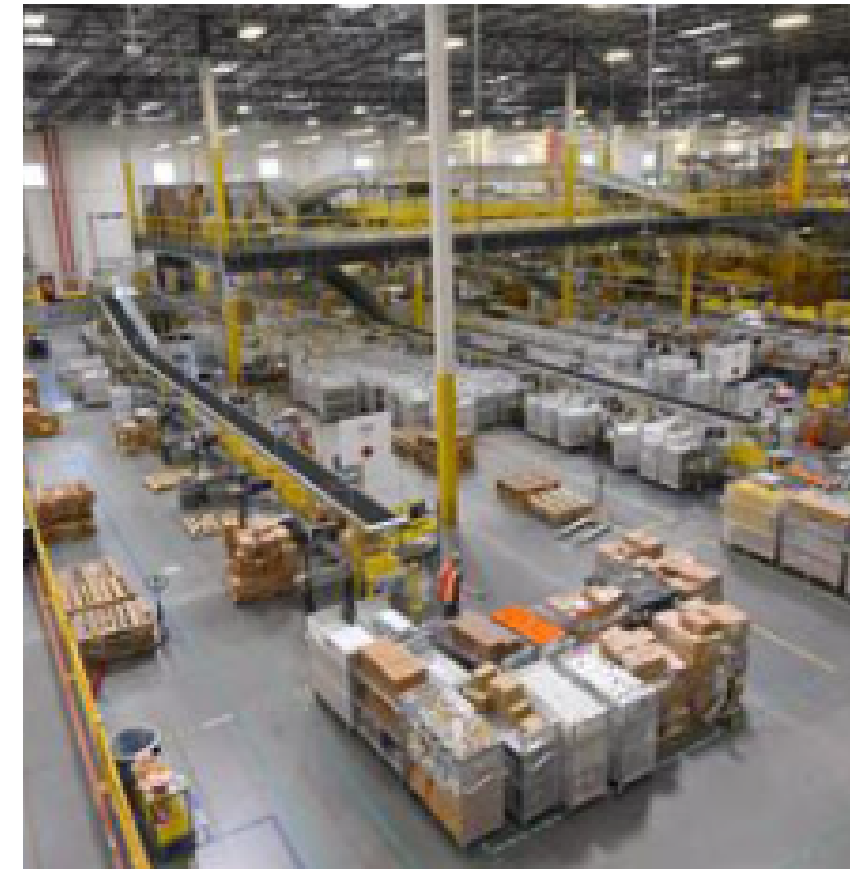
# INDUSTRIES WE SERVE



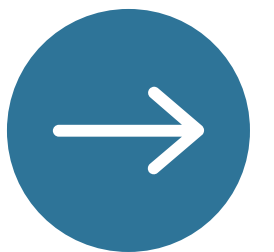
**COMMERCE  
RETAILER**



**LOGISTICS  
COMPANY**



**FULFILLMENT  
CENTER**





Do you want a  
box making machine?

# GET IN TOUCH



+91 84477 31702

[www.reallygreatsite.com](http://www.reallygreatsite.com)

Plot no. 379, Sector 3, IMT  
Bawal, Haryana, INDIA