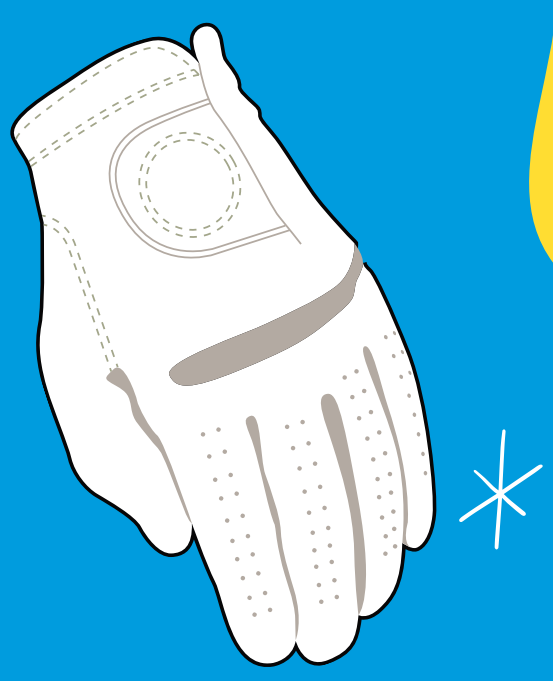


# INNOVATIONS IN E-SCOOTER GLOVE TECHNOLOGY

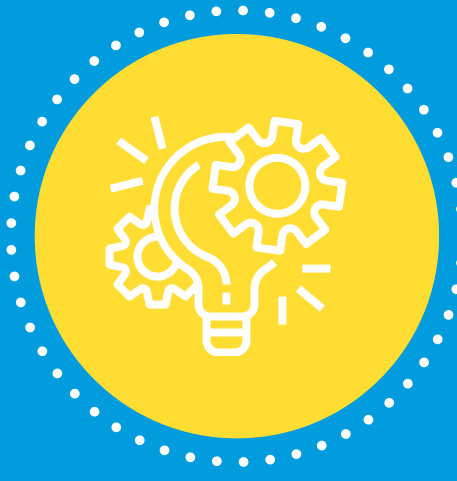
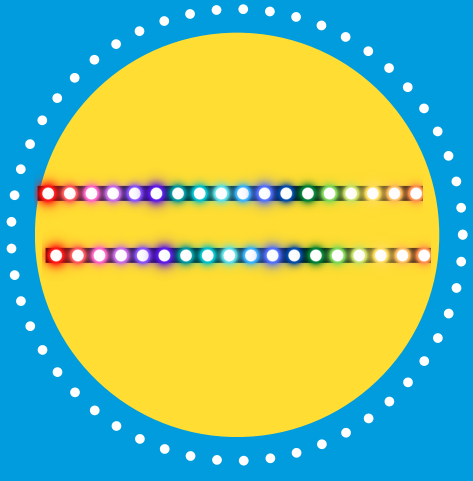


## SMARTPHONE INTEGRATION

E-scooter gloves with touchscreen compatibility enable riders to operate smartphones while keeping their gloves on, enhancing convenience and safety.

## LED SIGNALING LIGHTS

Gloves with built-in LED lights provide turn signals, brake lights, and hazard indicators, improving visibility and communication on the road.

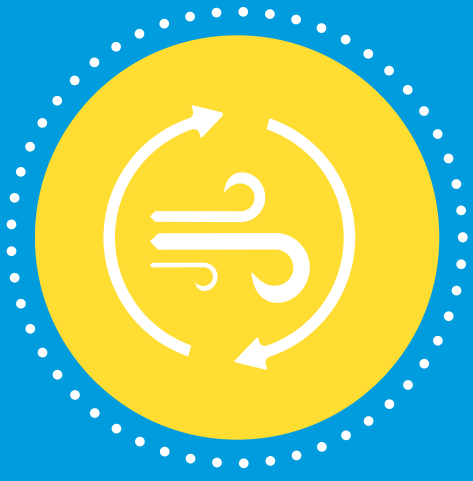


## IMPACT PROTECTION TECHNOLOGY

Advanced materials like carbon fiber and Kevlar are integrated into gloves to reduce hand injuries by absorbing and distributing impact forces during accidents.

## CLIMATE CONTROL FEATURES

Gloves with breathable fabrics and adjustable ventilation systems regulate temperature and moisture, ensuring comfort in various weather conditions.



## WIRELESS CONNECTIVITY

Some gloves offer wireless connectivity to e-scooter systems or smartphone apps, allowing riders to adjust settings and receive notifications without removing their gloves, enhancing user experience and safety.

**CONTACT WYRD RYDS**