

WHY TENANT POLICE VERIFICATION IS CRUCIAL

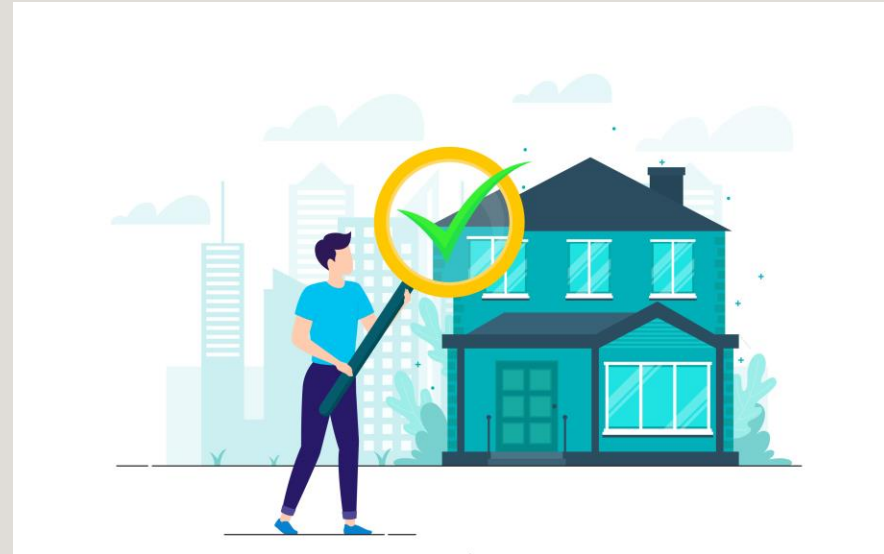
BY – FORCE TRACK

INTRODUCTION

For many of us, renting out a space seems like a financially rewarding decision. However, the landlord must use caution while selecting tenants. Since only the type of tenant you select for your rental property will determine the success of your investments. This safeguarding procedure must be correctly followed for your personal protection because [tenant identity verification](#) is a crucial part of it. You should take these easy precautions to guarantee that the tenant you are renting your property to is trustworthy:

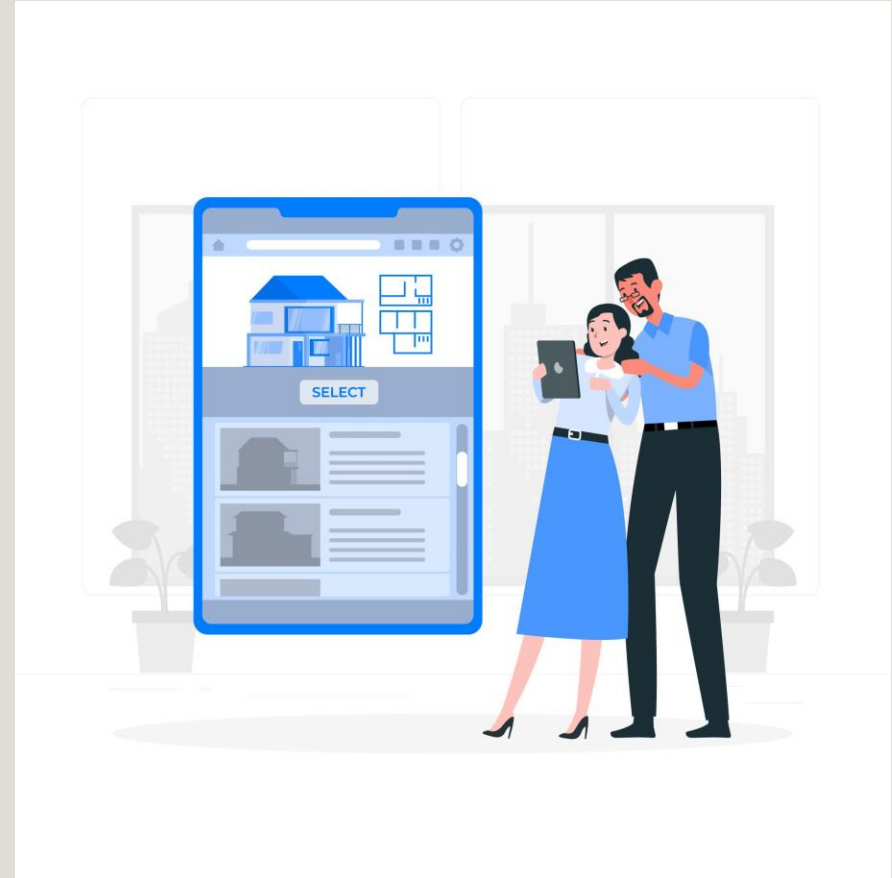
POLICE VERIFICATION

Before giving the keys to the house or apartment, every landlord should have their tenant checked. The tenant must give out all the information, and other pertinent details. It confirms a tenant's identity and makes it simple for the landlord to call the police in the event of a disagreement.



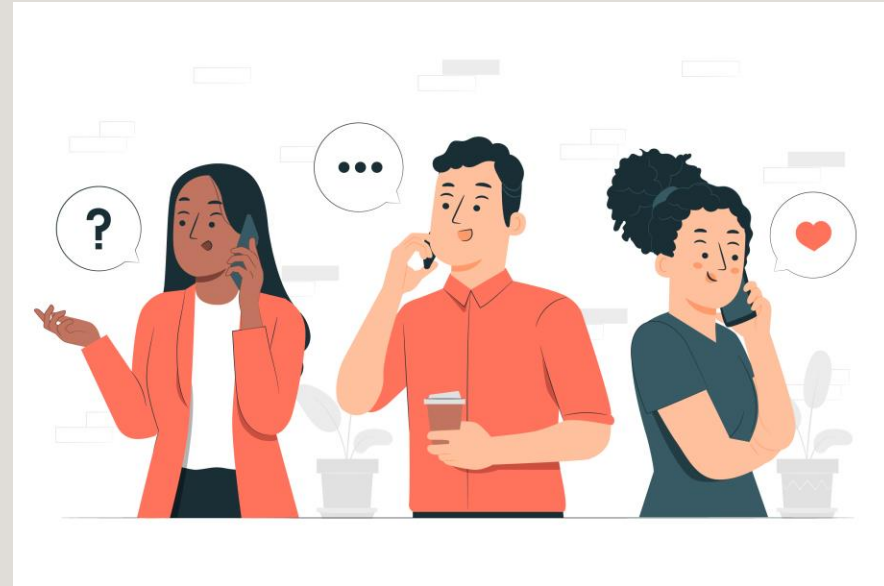
BACKGROUND CHECK

The first and most crucial stage in tenant verification is a background check. You might be able to learn via a background check if your tenant has a history of not paying rent or damaging rented property in this case.



CONTACT PREVIOUS LANDLORD

You can check with the tenant's former landlords if they have lived in the same neighborhood or city as the tenant. To make sure the person is trustworthy for you to rent out your property, you can ask any pertinent questions.



PERSONAL REFERENCES

Additionally, the landlord may need a minimum of two personal references who can be contacted to learn more about the tenant and confirm certain facts. Verifying the tenant can be done by asking family and friends. It's not always necessary to learn everything there is to know.



THANK YOU

It is crucial to sustain society's sense of safety and security. Police and tenant identity checks are essential in order to do this. The likelihood of theft and robbery incidents might be greatly increased by failing to carry out these verifications. Identity confirmation and background checks are crucial in determining the reliability and suitability of people applying for jobs or housing in a particular area.

Get in touch with Force Track, to start the [tenant police verification](#) for a more safe society.